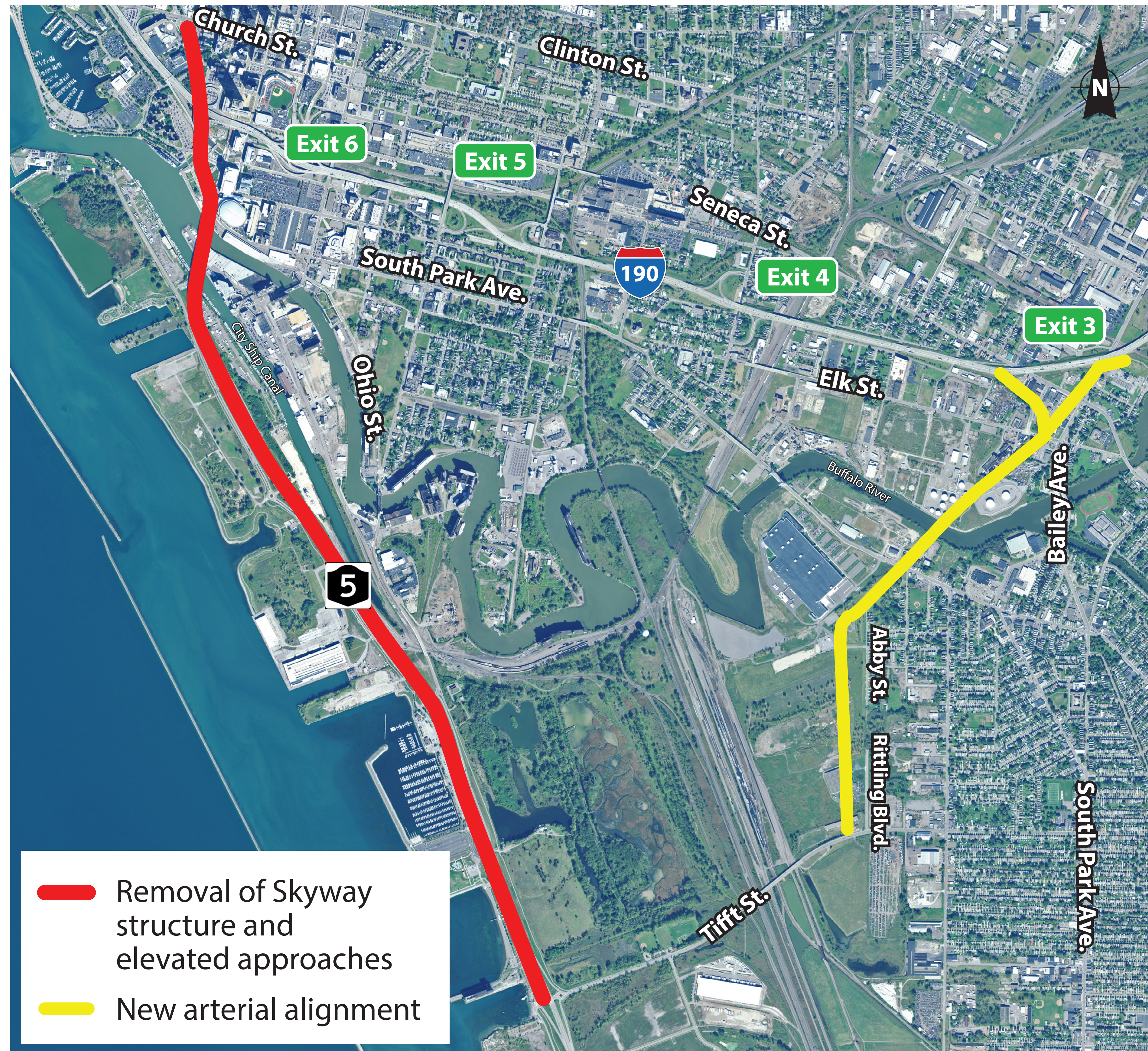


CONCEPT UNDER CONSIDERATION: SKYWAY REMOVAL WITH NEW TIFFT STREET ARTERIAL



- Removes Skyway structure and elevated approaches between Tifft Street and Church Street
- Extends Tifft Street on a new alignment with four lanes from the intersection at Rittling Boulevard, extending north parallel to Abby Street, and continuing along an old railroad right-of-way over the Buffalo River to I-190
- Modifies I-190 interchange at Seneca Street (Exit 3)